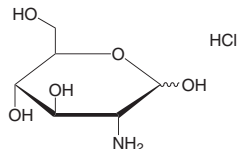


Type analysis

Purity (HPLC) ≥97,0 %

Art. No.	Pack Qty.	Pack.
1LE2.1	10 mg	glass

D(+)-Glucosamine hydrochloride



Chitosamine hydrochloride

$C_6H_{14}ClNO_5 \cdot D$ 0,83 g/cm³ · mp 192 °C ·
flp 225,9 °C

M 215,64 g/mol

CAS No. 66-84-2 · EC no. 200-638-1

WGK 1

D(+)-Glucosamine hydrochloride ≥99 %, for biochemistry

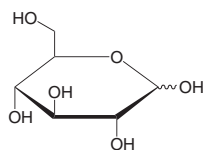
Type analysis

Appearance fine white crystals

Assay ≥99 %

Art. No.	Pack Qty.	Pack.
3769.1	100 g	plastic

D(+)-Glucose



Dextrose · Blood sugar

$C_6H_{12}O_6$ · mp 146 to 152 °C

M 180,16 g/mol

CAS No. 50-99-7 · EC no. 200-075-1

WGK 1

D(+)-Glucose p.a., ACS, anhydrous

Biochemical and microbiological applications.

Guarantee analysis

Specific rotation $[\alpha]_D^{25}$ (c=10 in H₂O) +52,5° to +53,0°

In H₂O insoluble matter ≤0,003 %

Loss on drying (105 °C) ≤0,2 %

Ash content (as SO₄) ≤0,01 %

Acidity (as CH₃COOH) ≤0,002 meq/g

Starch complies

Chloride (Cl) ≤0,0025 %

Sulphate and sulphite (as SO₄) ≤0,0025 %

Heavy metals (as Pb) ≤0,0005 %

Arsenic (As) ≤0,00004 %

Lead (Pb) ≤0,0005 %

Cadmium (Cd) ≤0,001 %

Iron (Fe) ≤0,0005 %

Copper (Cu) ≤0,0005 %

Nickel (Ni) ≤0,0005 %

Art. No.	Pack Qty.	Pack.
X997.1	250 g	plastic
X997.2	1 kg	plastic
X997.3	2.5 kg	plastic
X997.4	5 kg	plastic
X997.5	25 kg	plastic

D(+)-Glucose

CELLPURE® ≥98 %, anhydrous

For cell culture and biochemistry.

Guarantee analysis

Endotoxins ≤5,0 I.U./g

Assay ≥98 %

Sulphated ash ≤0,5 %

Water (KF) ≤1 %

Sulphite (SO₃) ≤0,005 %

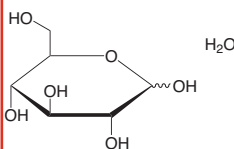
Specific rotation $[\alpha]_D^{20}$ +52,5° to +53,3°

Art. No.	Pack Qty.	Pack.
HN06.1	250 g	plastic
HN06.2	500 g	plastic
HN06.3	1 kg	plastic
HN06.4	5 kg	plastic

D(+)-Glucose

▶ ROTI®Fair Glucose see page 573

D(+)-Glucose monohydrate



Dextrose · Blood sugar

$C_6H_{12}O_6 \cdot H_2O$ · mp 83 °C

M 198,17 g/mol

CAS No. 77938-63-7 · EC no. 200-075-1

WGK 1

D(+)-Glucose monohydrate ≥99,5 %, Ph. Eur.

Suitable for cell culture, tested for endotoxines.

Guarantee analysis

Appearance white to off-white cryst. powder

Assay (dry substance) ≥99,5 %

Identity complies

Water (KF) 7,5-9,5 %

Appearance of solution complies

Specific rotation $[\alpha]_D^{20}$ +52,5° to +53,3°

Conductivity (25 °C) ≤20 μS/cm

Soluble starch, sulphite (SO₃) ≤0,0015 %

Dextrine complies

Endotoxin content <1,25 I.U./g

Related Substances:

Impurities A and B (sum) ≤0,4 %

Related substances (impurity C) ≤0,2 %

Impurity D ≤0,15 %

Related substances (unspecific impurities) ≤0,1 %

Related substances (total) ≤0,5 %

Disregard limit ≤0,05 %

Art. No.	Pack Qty.	Pack.
6780.1	1 kg	plastic
6780.2	5 kg	plastic
6780.4	10 kg	plastic
6780.3	50 kg	plastic

D(+)-Glucose monohydrate for microbiology

Biochemical and microbiological applications.

Guarantee analysis

Specific rotation $[\alpha]_D^{20}$ +52,5° to +53,3°

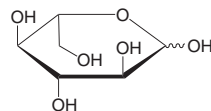
Appearance of solution clear, brownish-yellow solution

Water (KF) 7,0-9,5 %

Suitable for microbiology complies

Art. No.	Pack Qty.	Pack.
6887.1	1 kg	plastic
6887.2	2.5 kg	plastic
6887.3	5 kg	plastic
6887.5	25 kg	plastic

L(-)-Glucose



$C_6H_{12}O_6$ · mp 142 to 143 °C

M 180,16 g/mol

CAS No. 921-60-8 · EC no. 213-068-3

WGK 1

L(-)-Glucose ≥98 %, for biochemistry

Mixture of anomers

Type analysis

Appearance white to off-white crystalline powder

Assay (HPLC) ≥98,0 %

Art. No.	Pack Qty.	Pack.
7509.1	100 mg	glass
7509.2	500 mg	glass
7509.3	1 g	glass

Glucose oxidase (GOD)

GOD · GOx

CAS No. 9001-37-0 · EC no. 232-601-0

WGK 1

 Danger H334

Glucose oxidase (GOD) ~360 U/mg protein (approx. 280 U/mg material)

From *Aspergillus niger*, freeze-dried.

Packaging: 0,5 MU

Storage temperature: -20 °C

Transport temperature: ambient temp.

Type analysis

Appearance yellow powder

Activity ~360 U/mg protein

α-Amylase <0,05 %

Invertase <0,5 %

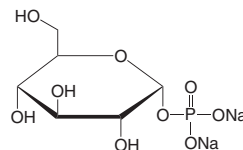
Maltase <0,05 %

Ratio glucose-oxidase/catalase >2000

Art. No.	Pack Qty.	Pack.
6028.1	1 unit(s)	plastic

For further information see www.carlroth.com

α-D-Glucose-1-phosphate disodium salt tetrahydrate



$C_6H_{11}Na_2O_9P \cdot 4 H_2O$ · mp 138 °C

M 376,17 g/mol

CAS No. 56401-20-8 · EC no. 260-154-1

WGK 1